

A PART OF THE WEST 1/2 OF SEC. 23, T.5N., R.1W., S.L.B. & M.
UINTAH-HIGHLANDS SUBDIVISION NO. 5
 & AMENDED LOTS 74-81, 84 & 85

340

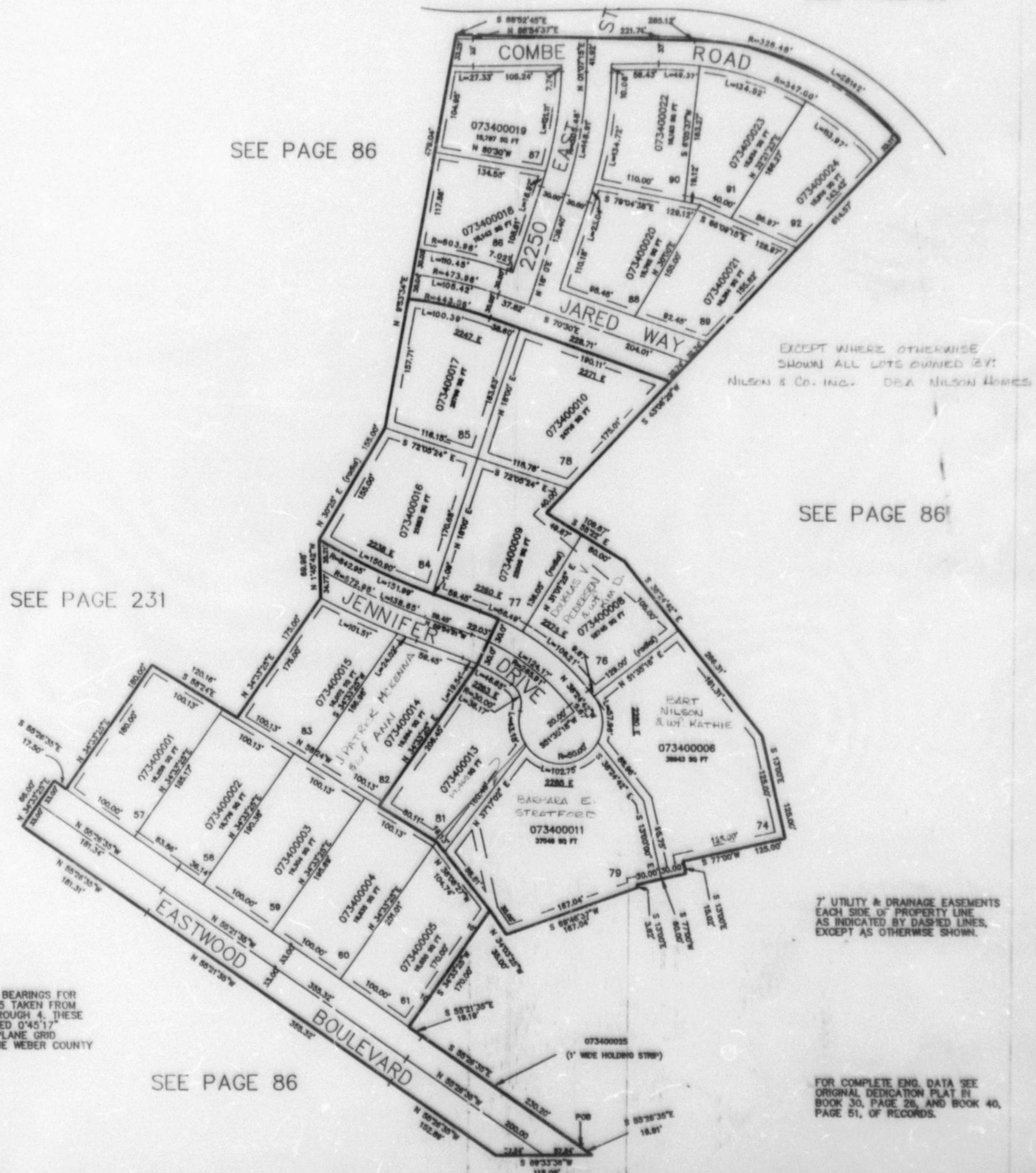
IN WEBER COUNTY

TAXING UNIT: 159

SCALE 1"=100'

SEE PAGE 86

SEE PAGE 86



SEE PAGE 231

SEE PAGE 86

SEE PAGE 86

FOR COMPLETE ENG. DATA SEE
 ORIGINAL DEDICATION PLAT IN
 BOOK 30, PAGE 28, AND BOOK 40,
 PAGE 51, OF RECORDS.